



LOCK RELEASE VALVE

MODEL LR3, LR5

Features

Lock release valve to eliminate steam-locking of steam traps J3X and J5X if installed on cylinder dryers, presses and other steam-using equipment prone to steam-locking.

1. Fine-adjustment to keep steam loss low.
2. Maintenance and repair is possible without removing the valve from the steam trap.
3. Simple construction and compact design.
4. All parts made of stainless steel.



Specifications

Model	LR3	LR5
For Steam Trap Model	J3X, JF3X	J5X, JF5X
Maximum. Operating Pressure MPaG PMO	2.1	
Maximum. Operating Temperature (°C) TMO	220	

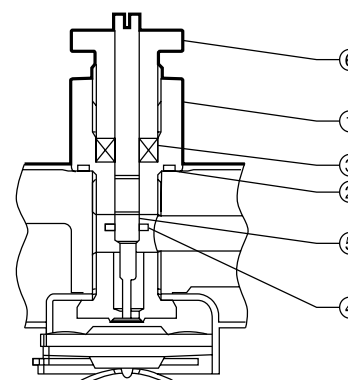
PRESSURE SHELL DESIGN CONDITIONS (**NOT** OPERATING CONDITIONS):
 Maximum Allowable Pressure(MPaG) PMA: 2.1 (J3X, J5X); 1.57 (JF3X, JF5X)
 Maximum Allowable Temperature(°C) TMA: 220



To avoid abnormal operation, accidents or serious injury, DO NOT use this product outside of the specification range. Local regulations may restrict the use of this product to below the conditions quoted.

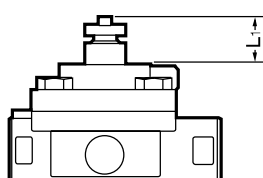
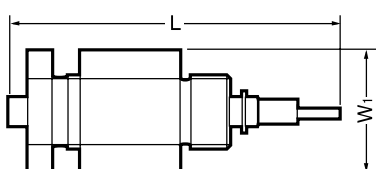
No.	Description	Material	JIS	ASTM/AISI*
①	Gland Case	Stainless Steel	SUS303	AISI303
②	Gasket	Fluorine Resin	PTFE	PTFE
③	Gland Packing	Graphite	—	—
④	Snap Ring	Stainless Steel	SUS304	AISI304
⑤	Element Retainer	Stainless Steel	SUS303	AISI303
⑥	Gland Retainer Nut	Stainless Steel	SUS303	AISI303

* Equivalent



Dimensions

•LR3, LR5



LR3, LR5

(mm)

Model	L	L ₁	W ₁	Weight (kg)
LR3	58	23	22	0.08
LR5	66			

